

PIILIX-Design

**DATASHEET
EGT-Gauge**



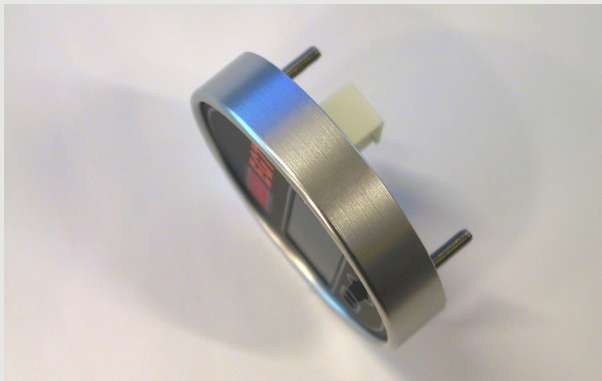
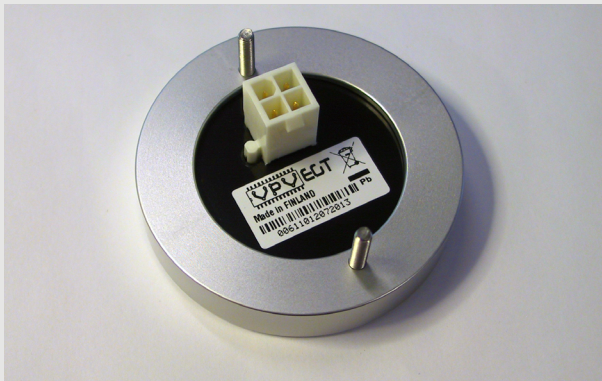
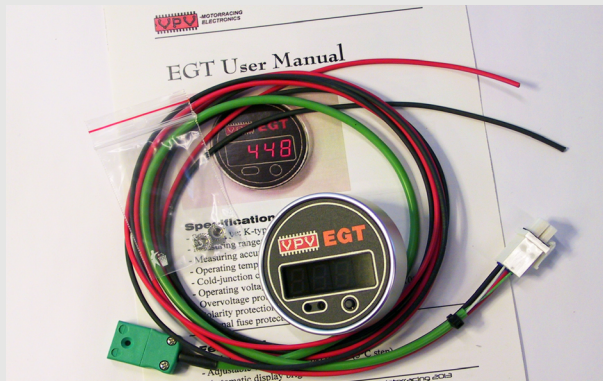
GENERAL

EGT-GAUGE is an automotive Exhaust Gas Thermometer. It can measure temperatures with customer supplied K-Type non-grounded thermocouple sensor. EGT-GAUGE can measure temperature from 0°C to 1100°C, Fahrenheit display is not possible. EGT-GAUGE has been produced under company's earlier brand 'VPV-Motorracing Electronics'.

EGT-GAUGE needs stable 12Vdc nominal supply voltage from external source like automotive 12V Lead-Acid Battery. Due to high current consumption of LED-display, long-lasting operation is not possible from low-capacity household batteries (9V prismatic or AA/AAA cells etc).

EGT-GAUGE can be used with any K-type thermocouple sensor having electrically floating measuring wires (ie non-grounded sensor).

EGT-GAUGE is not waterproof. Usage in motorcycles or in any other wet environment is not allowed.



TECHNICAL SPECIFICATION

- Peak value memory and reset
- Adjustable warning light 0-1100°C (with 5°C adjustment step)
- Automatic display brightness control
- Sensor type: K-type thermocouple, non-grounded
- Measuring range: 0-1100°C (**NOTE! Display only in °C !**)
- Measuring accuracy: $\pm 3^{\circ}\text{C}$ (0-1000°C, $t_{\text{amb}} = 25^{\circ}\text{C}$)
- Operating temperature range: -40 - +80°C
- Cold-junction compensation range: -40 - +80°C
- Operating voltage: 7-16Vdc
- Current consumption: 90 mA max (bright environment)
- Overvoltage protection: 39V, 15A max (600W) 10/1000µs pulse
- Polarity protection: -400Vdc max continuous
- Internal fuse protection: 2 x F2A (non-serviceable)
- Display dimensions: $\varnothing 58 \times 12 \text{ mm}$ ($\varnothing 2.28 \times 0.47''$)
- CNC-machined aluminium case
- Every unit is 2-point factory calibrated

SCOPE OF DELIVERY

- 1 pc EGT-Gauge Display Unit
- 1 pc Wire Harness: Power wires; L = 1.5 m (5ft), sensor wire; L = 0.5m (20")
- 1 pc Stainless Steel M3 Fixing Kit
- 1 pc User Manual, English version

FOR DETAILED INFO, PLEASE DOWNLOAD USER MANUAL

https://www.piilix-design.fi/manuals/EGT-GAUGE_USER_MANUAL_EN.pdf